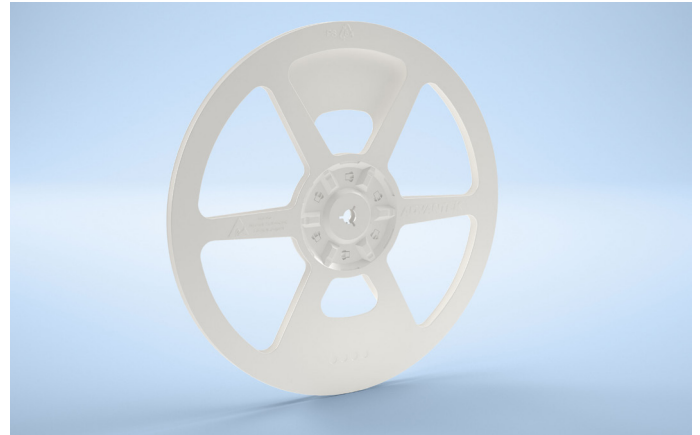


Advantek's LOKREEL Trimline plastic injection-molded packaging reels are an exceptional choice when cost is the key concern. It offers material reduction beyond the LOKREEL Lite® series - while maintaining the same durable hub structure. Room for one label as large as 2.4 x 4" (61 x 102mm) is supported each side.

- > Shipped in halves to decrease shipping costs by up to 70%
- > "Nest-stacked", high density packaging reduces needed storage space by as much as 60%
- > Halves configuration offers flexibility in managing the different reel widths needed during production - from 8 to 56mm
- > Assembles with simple twisting motion, no gluing or fasteners



Material Properties

Property	Typical Value	Test Method
Tensile Strength	3,500 PSI	ASTM D 638
Elongation	40%	ASTM D 638
Izod Impact Strength	21 KJ/m ²	ASTM D 256
Flexural Modulus	270,000 PSI	ASTM D 790
Heat Distortion Temperature	80°C	ASTM D 648
Specific Gravity	1.04	ASTM D 792
Surface resistivity	≥1.0E5, <1.0E12 Ohms/square	ASTM D 257
Color	White	

Note: The values presented for this product are typical laboratory data and may be changed without notice.

Construction

Injection-molded using a specially formulated high-impact polystyrene (HIPS). Re-use of this product may degrade antistatic properties.

Configurations

Flanges have an outer diameter of 13" (330mm) and an arbor hole diameter of 1/2" (13mm). Hub diameter is the standard 4" (102mm) - suitable for most carrier tapes. Available hub widths include 4, 8, 16 and 28mm. Combinations of these produce reels for EIA standard carrier tape widths of 8, 12, 16, 24, 32, 44 and 56mm. The table to the right demonstrates the reel width produced from combinations.

Shelf Life and Storage

Product should be used within 2 years of the date of manufacture. Store in its original packaging in a climate-controlled environment of 21 ± 17°C (70 ± 30°F). Stabilize at room temperature prior to use. Mechanical integrity is not affected by humidity.

Reel Combinations

Reel Width (mm)	Flange combinations (mm)
8	4 + 4
12	4 + 8
16	8 + 8
24	8 + 16
32	16 + 16 or 4 + 28
44	16 + 28
56	28 + 28

Ordering Information

Hub Width (mm)	4" Diameter Hub
4	RT33404WT
8	RT33408WT
16	RT33416WT
28	RT33428WT