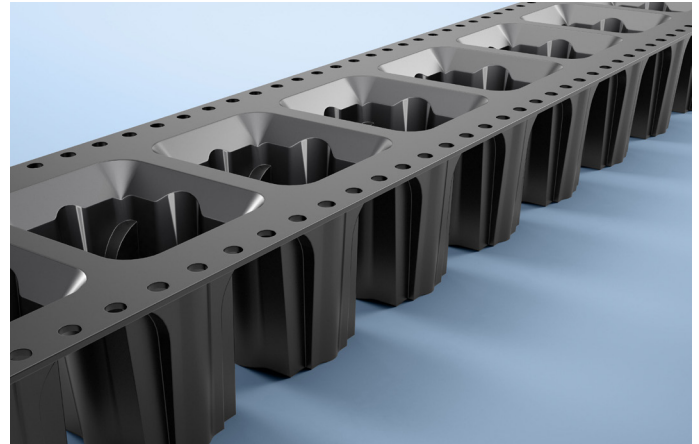


Advantek's high formability K-Series Tri-Laminate PS+C (polystyrene with carbon) is suitable for a wide range of sizes and design complexities. It provides protection from physical and ESD damage during handling and is available in a variety of thicknesses.

- > Suitable for standard and complex pocket designs
- > Available in widths from 8mm to 200mm
- > Easily supporting pocket depths of over 25mm
- > All Advantek carrier tape is manufactured in accordance with current EIA standards to ensure compatibility with tape and reel equipment



Material Properties

| Property | Value | Test Method |
|---------------------------|--|-------------|
| Material Code - Thickness | KC - 0.30mm KU - 0.40mm KW - 0.50mm KY - 0.60mm | - |
| Specific Density | 1.06g/cc | ASTM D792 |
| Elongation | 38.75% | ASTM D882 |
| Tensile Strength | 26.5 MPa | ASTM D882 |
| Surface Resistivity | $\geq 10^5$, $< 10^{12}$ Ohms/Square | ASTM D257 |
| Color | Black | - |

Note: The values presented for this product are typical laboratory data and may be changed without notice.

Shelf Life and Storage

We recommend that Advantek Polystyrene Black Tri-Laminate carrier tapes be used within 5 years of the date of manufacture. Store this product in its original packaging in a climate-controlled environment where temperature ranges from 21°C +/- 17°C (70°F +/- 30°F). This product is not affected by humidity. Allow the product to stabilize at room temperature prior to use.

Camber

The Advantek Polystyrene Black Tri-Laminate series meets the current EIA-481 standard for camber that is not greater than 1mm in 250 linear millimeters. For 8mm carrier tape in the level wind format, the camber will not be greater than 2mm in 250 linear millimeters.

Cover Tape Compatibility

| Type | Heat Activated | | | | | | | | Pressure Activated |
|---------------------|----------------|-----|-----|-----|-----|----|-----|------|--------------------|
| | HUB | HUC | HUD | HUE | HUF | AA | HSA | ABx™ | PUA |
| Polystyrene Tri-Lam | ✓ | ✓ | ✓ | ✓ | ✓ | ✓ | ✓ | ✓ | |