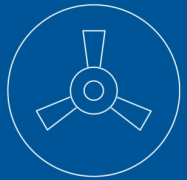
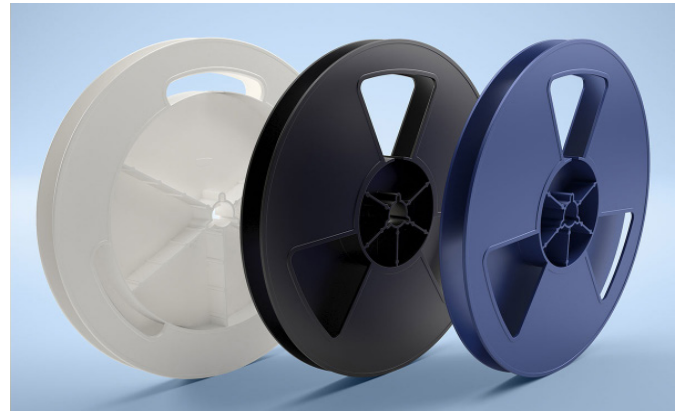


7" LOKREEL® Mini RE Component Packaging Reels



Advantek's LOKREEL® Mini RE anti-static component packaging reels provide excellent protection and big space for labels when shipping small components packaged in carrier tape, such as bare die and small integrated circuit packages. It's made from general-purpose and high-impact polystyrene for added strength and durability. The 7" LOKREEL Mini RE reels are available in a variety of widths.

- > Available in two hub sizes
 - > 60mm / 2.36 inches
 - > 127mm / 5.0 inches
- > Width Options: 8, 12, 16, 24, and 32mm
- > Large area for labels, accommodates labels up to 2"x4"
- > Reels may be ordered in white, blue, or black
- > Anti-static (P/N suffix: WT/BL/RBK)
- > Tighter SR (P/N suffix: DBK)



Material Properties

Property	Typical Value	Test Method
Tensile Strength	20 MPa	ISO 572
Elongation	40%	ISO 572
Izod Impact Strength	16KJ/m ²	ASTM D 256
Flexural Modulus	1,360 MPa	ISO 178
Heat Distortion Temperature	77°C	ASTM D 648
Specific Gravity	1.03	ASTM D 792
Surface Resistivity	WT/BL/RBK: $\geq 10^5$, $< 10^{12}$ Ohms/sq DBK: $\geq 10^5$, $< 10^{10}$ Ohms/sq	ASTM D 257
Color	White, Blue, Black	N/A

Note: The values presented for this product are typical laboratory data and may be changed without notice.

Construction

7" LOKREEL® Mini RE Reels are injection-molded commonly using a General-Purpose Polystyrene (GPPS) and High Impact Polystyrene (HIPS).

Configurations

Advantek 7" LOKREEL® Mini RE have an outside diameter of 7" (180mm) and a 1/2" (13mm) diameter arbor hole. Reel are available in a variety of hub widths. Reel hub measure 2.36" (60mm) in diameter to 5" (127mm) and are available in a variety of EIA standard widths from 8 to 32mm.

Shelf Life and Storage

We recommend that the Advantek LOKREEL® Mini RE reels be used within 2 years of the date of manufacture. Store this product in its original packaging in a climate-controlled environment where temperature ranges from 21°C±17°C (70°F±30°F). Allow the product to stabilize at room temperature prior to use. The mechanical integrity of the product is not affected by humidity.

Ordering Information 60 mm (2.36 in.) Hub

Hub	White (WT)	Blue (BL)	Black (RBK)	Black (DBK)
8mm	RE708WT	RE708BL	RE708RBK	RE708DBK
12mm	RE712WT	RE712BL	RE712RBK	RE712DBK
16mm	RE716WT	RE716BL	RE716RBK	RE716DBK
24mm	RE724WT	RE724BL	RE724RBK	RE724DBK
32mm	RE732WT	RE732BL	RE732RBK	RE732DBK

Ordering Information 127 mm (5 in.) Hub

Hub Width	White (WT)	Black (DBK)
8mm	RE7085WT	RE7085DBK
12mm	RE7125WT	RE7125DBK
16mm	RE7165WT	RE7165DBK
24mm	RE7245WT	RE7245DBK